

GbE Managed Media Converter Solution

AMC230F Series



- **Converts CAT5 to optical fiber**
- **Supports IEEE802.3U and IEEE802.3z**
- **1000Base-Tx/Fx protocol**
- **SFP Plugin for various distance**
- **Full duplex and half duplex**
- **Automatic identification of MDI/MDI-X cross line**
- **Internal and external power supply available**
- **Remote fault detection (RFD)**
- **Web GUI & SNMP**

ACT AMC230F Series Gigabit Ethernet Media Converter is an advanced series of high-performance managed converters that comply with IEEE 802.3 standards. AMC230F converters can supervise and configure in real time the situation of remotely manageable fiber media converters.

This converter can be used as a standard alone unit in point to point applications with external power supply modules or a plug-in module to fit the AMC 19-inch converter chassis with 14 slots to save space, and capital expenditure.

AMC230F converters are compatible with various SFPs for different applications. The platform provides high-density ports to allow operators to quickly and easily expand existing networks and services.

AMC230F series offers compatibility with all existing Ethernet or Fast Ethernet devices in a network and provides high-performance data transmission with seamless cooperation with ACT routing and switching products

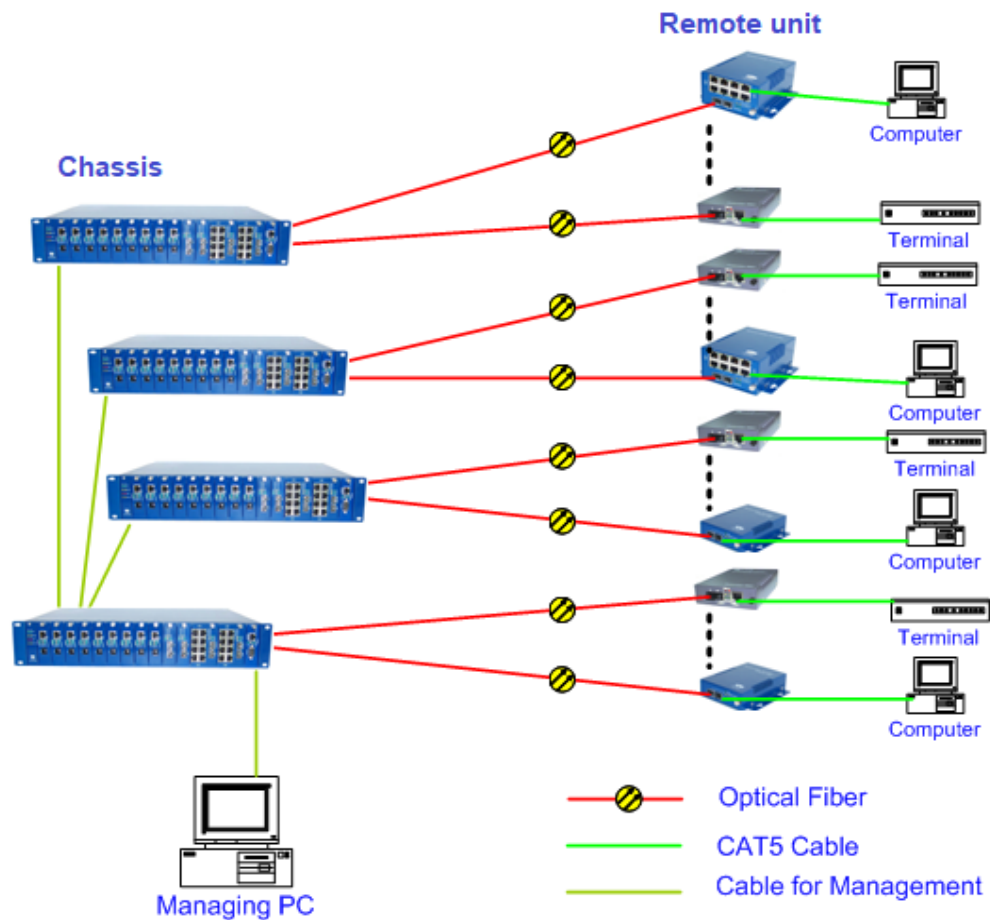
Key Features

- 10/100/BASE-T UTP to 1000 BASE-X gigabit Ethernet converter
- UTP port supports programmable 10/100/1000M half or full-duplex auto-negotiation with crossover options
- Supports jumbo frame of up to 10 Kbytes, configurable jumbo frame, including disable/enable
- Hot-swappable with remote converter power dying gasp alarm
- Programmable link fault pass-through (LFP) or remote fault detection (RFD) function
- Logical loop facility, supports several types of loopback tests
- Link transparency to indicate the link down from link partner with LED display for immediate visual status of each port
- SFP internal ID and status monitoring capability
- Dual power supply option with power on/off alarm
- Different temperature options available with temperature range of 0 °C to +50 °C
- Remote converter configuration and status monitoring using in-band OAM frame and not consuming any IP resources and link bandwidth
- Supports VLAN tag/untagged, Q-in-Q both SFP optical and RJ45 10/100/1000M Ethernet port
- Supports WEB GUI, Telnet and SNMP management, including status monitoring, configuration such as IP address, VLAN, firmware update, reboot, reset default, etc.
- Supports Syslog

Specifications

Item	Description
Interface Ports	1 × 10/100/1000Base-TX RJ-45 copper port 1 × 1000Base-X SFP port
Operating Temperature	0 °C to +50 °C
Storage Temperature	-20 °C to +80 °C
Humidity	5 % to 95 % RH (non-condensing)
Weight	Local plug-in card: 100 g Remote unit (w/out power adaptor and mounting bracket): 400g
Dimensions	Local plug-in card: 88 mm × 130 mm × 26 mm Remote unit (w/out mounting bracket): 90 mm × 135 mm × 28 mm

Application Diagram



Ordering Information

Product Name	Product Description
AMC230F	AMC23F GE Managed Media Converter, SFP slot, 1000 Base-TX RJ-45 port, SFP interface

Contact Information



Ascent Communication Technology Ltd

AUSTRALIA

140 William Street, Melbourne
Victoria 3000, AUSTRALIA
Phone: +61-3-8691 2902

CHINA

Unit 1933, 600 Luban Road
200023, Shanghai CHINA
Phone: +86-21-60232616

EUROPE

Pfarrer-Bensheimer-Strasse 7a
55129 Mainz, GERMANY
Phone: +49 (0) 6136 926 3246

HONG KONG SAR

Unit 9, 12th Floor, Wing Tuck Commercial Centre
177 Wing Lok Street, Sheung Wan, HONG KONG
Phone: +852-2851 4722

USA

2710 Thomes Ave
Cheyenne, WY 82001, USA
Phone: +1-203 816 5188

VIETNAM

15 /F TTC Building, Duy Tan Street
Cau Giay Dist., Hanoi, VIETNAM
Phone: +84 243 795 5917

WEB: www.ascentcomtec.com

EMAIL: sales@ascentcomtec.com

Specifications and product availability are subject to change without notice.
Copyright © 2018 Ascent Communication Technology Limited. All rights reserved.
Ver. ACT_AMC230F_GE Media_Converter_Datasheet_V1c_Aug_2018